

Chester Valley Trail West Feasibility Study and Master Plan



Public Meeting 2

March 1, 2018



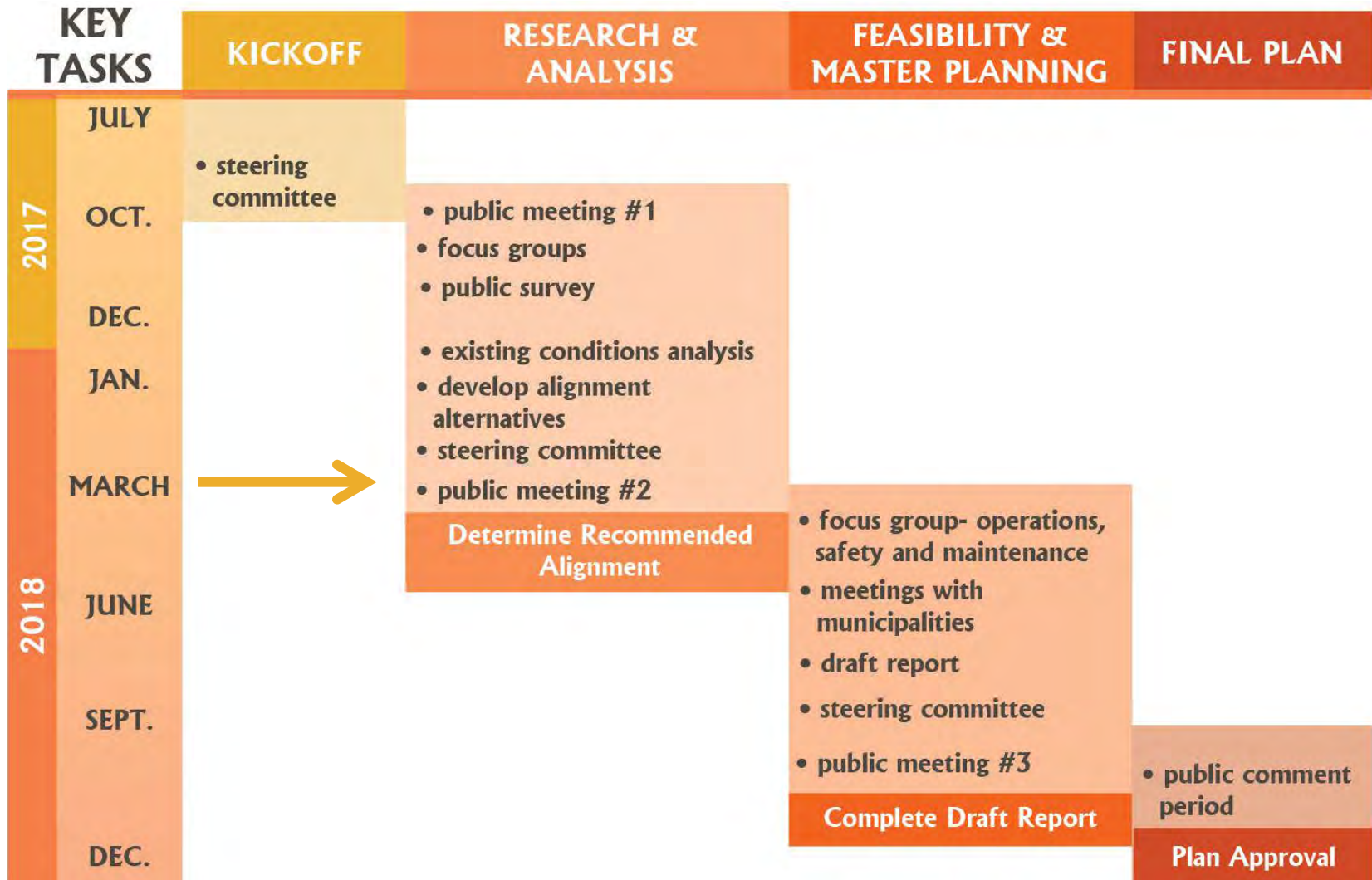
Chester Valley Trail WEST



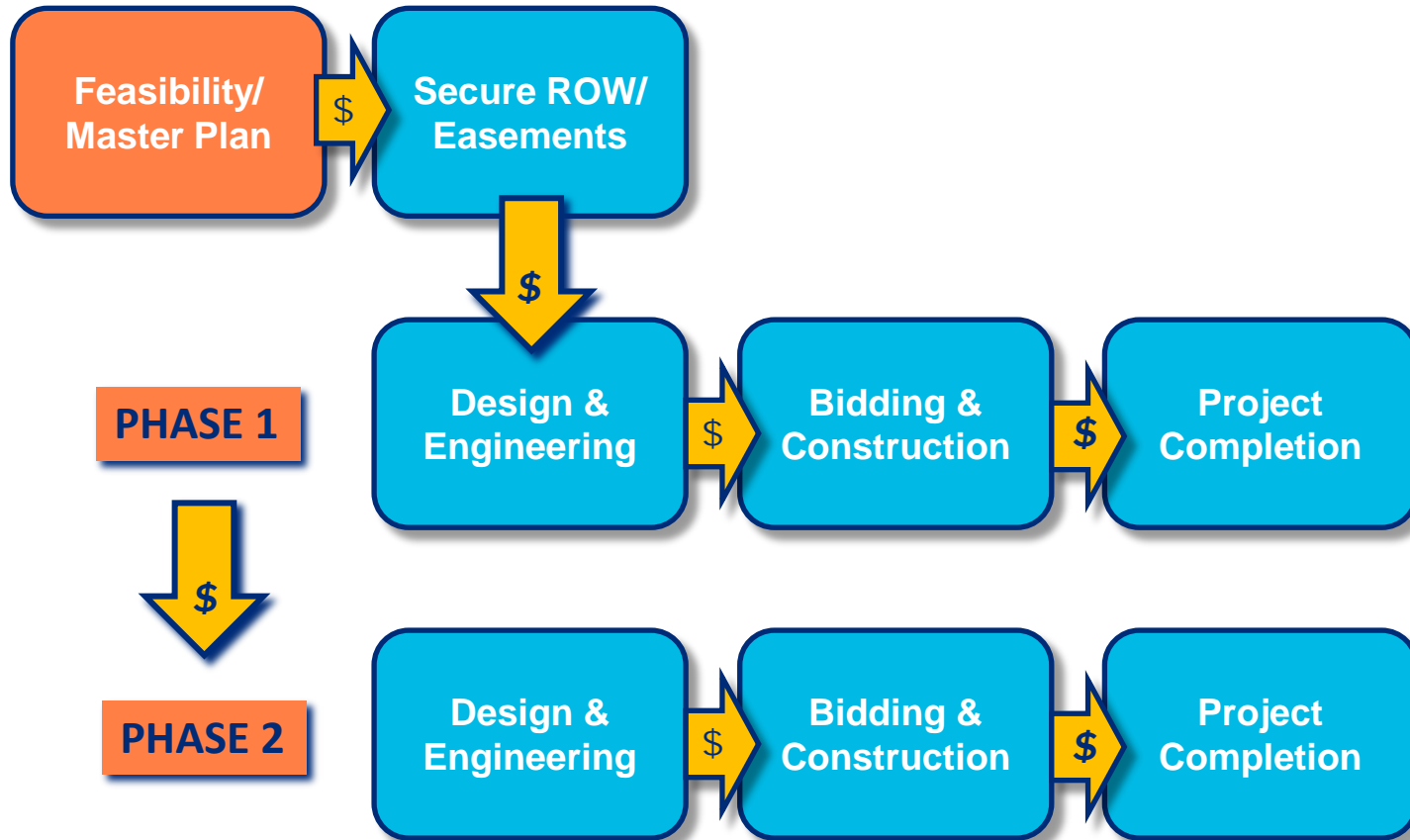
Agenda

- **Review project progress since last public meeting**
- **Brief project overview**
- **Findings from public survey**
- **Trail planning considerations- opportunities and constraints**
- **Overview of alignment alternatives**
- **Open House- feedback on alignment alternatives**

Project Schedule



Development Process

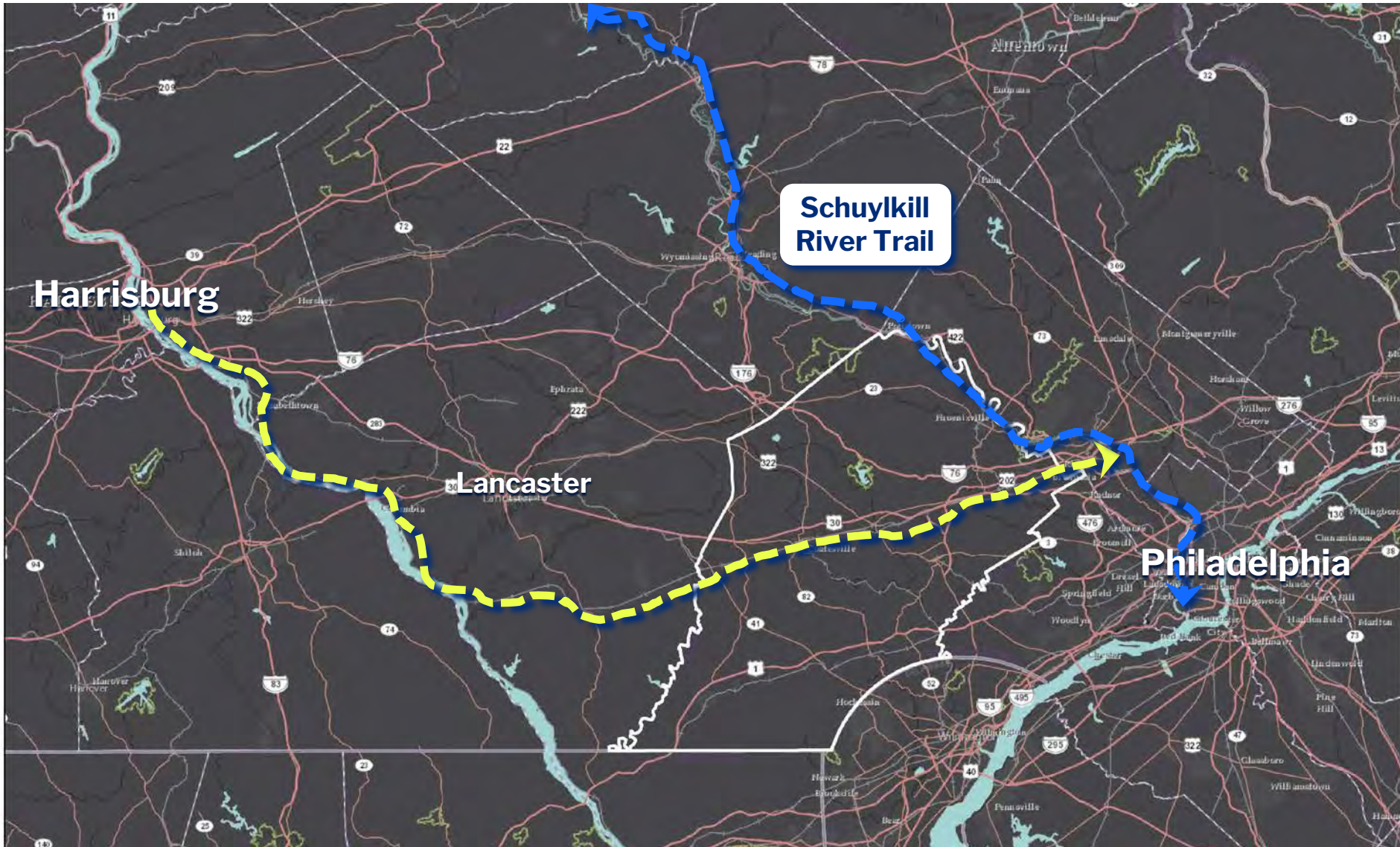


Project Background

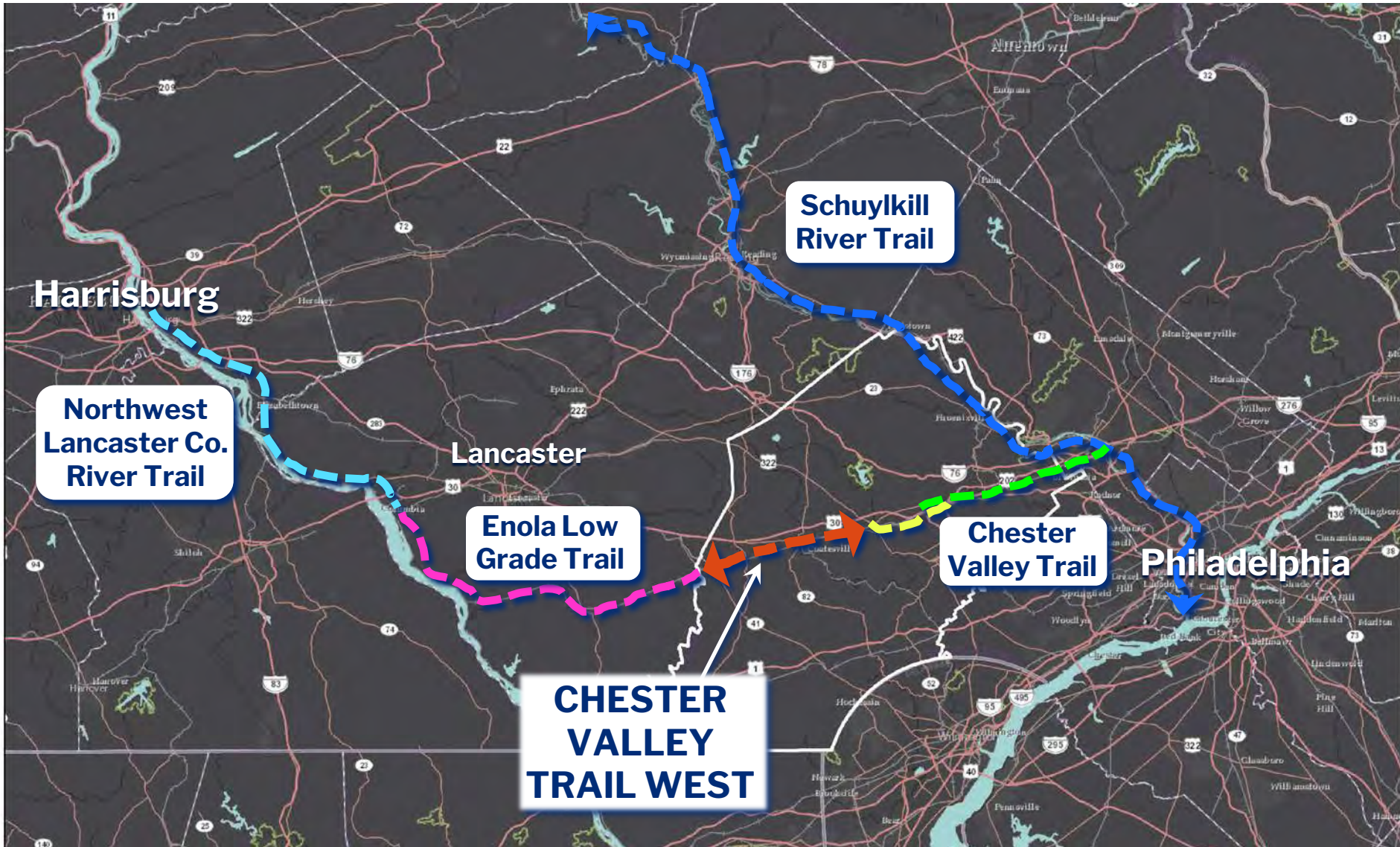


Chester Valley Trail WEST

Project Background

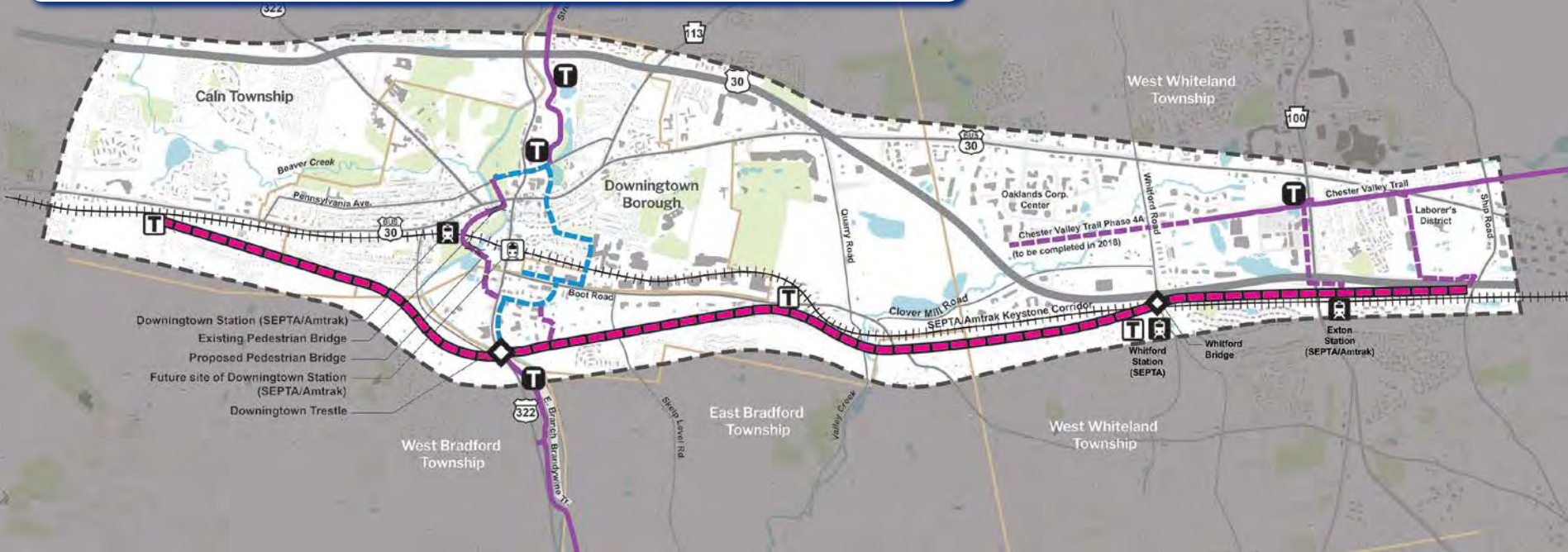


Project Background



Project Background

Chester Valley Trail Extension



Project Background



Chester Valley Trail WEST

Trail Towns



Frostburg, MD along the Great Allegheny Passage
(gaptrail.org)

Trail Towns:

- Are walkable and bike-friendly
- Have amenities for trail users (bike shops, cafes & restaurants with outdoor seating, hotels/B&Bs, etc.)
- Have wayfinding systems for both trails and businesses
- Studies show that trails are good for business!



Critical to have buy-in from the community, elected officials and local businesses!

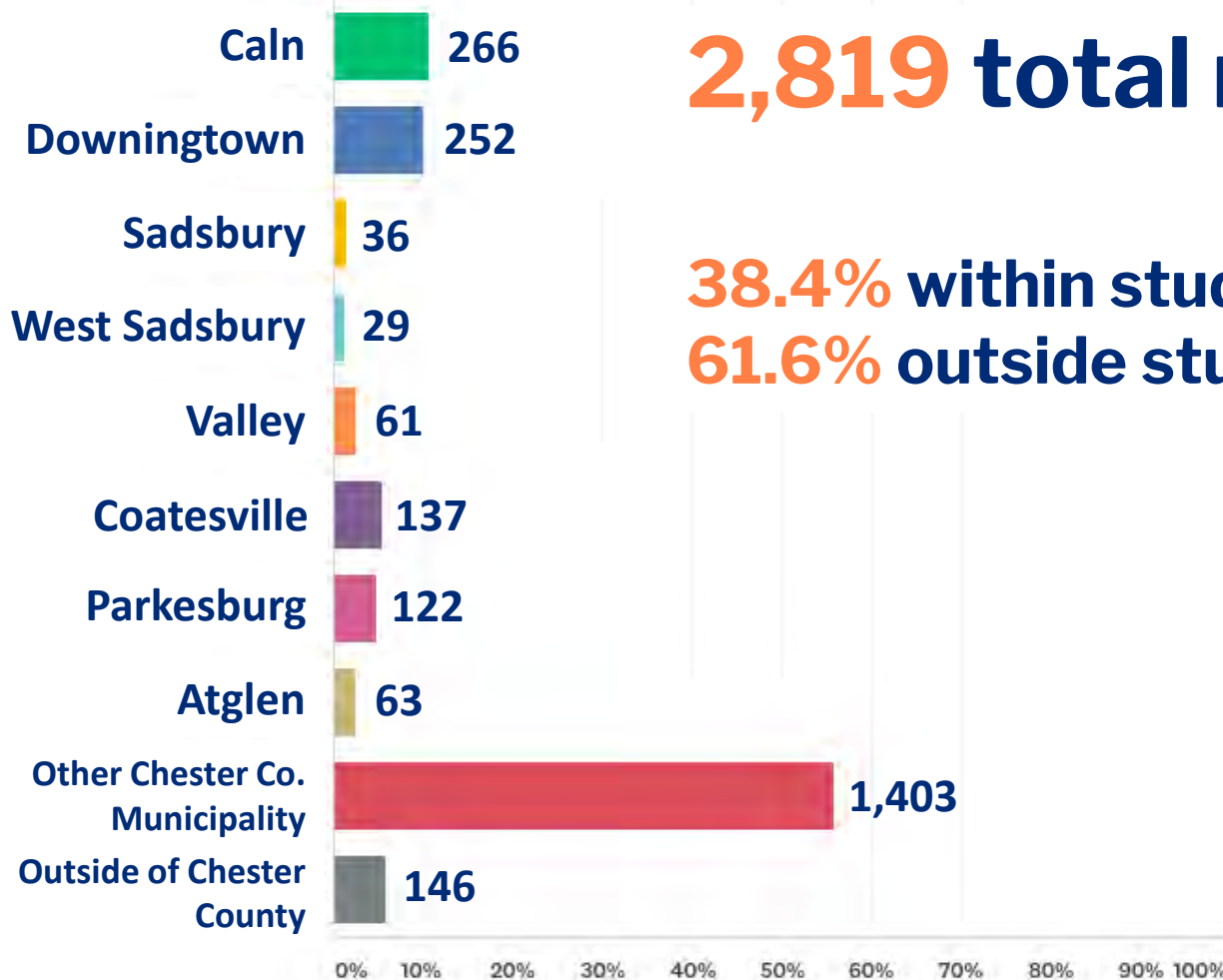
Public Engagement

- **Focus Groups**
 - Economic Development
 - Recreation, Fitness and Open Space
- **Meetings with Municipalities**
- **Steering Committee Meeting**
- **Outreach events**
- **Public Survey**

Public Survey Results

2,819 total responses

38.4% within study area
61.6% outside study area



Public Survey Results

Of respondents who live in the study area...

- **89%** support the extension of the **Chester Valley Trail**
- **70%** believe a trail that provided access to employment centers would encourage commuting by bicycle or walking
- **14%** feel there are enough recreation options available
- **4%** of respondents indicated they are not current trail users, and of those, **80%** sited lack of trails and safety concerns as the reason.
- Most popular **CURRENT** recreation destinations are **Struble Trail, Chester Valley Trail, and Hibernia Park.**

Public Survey Results

Of ALL survey respondents:

- **89%** *supportive of extending the Chester Valley Trail*
- **92%** use the trail for recreation and fitness
- **78%** would be likely to stop at a small business along the trail
- **62%** would feel comfortable using a bike lane or sidewalk if a multiuse trail were not feasible
- Most popular recreation destinations are **Chester Valley Trail, Struble Trail, and Schuylkill River Trail**

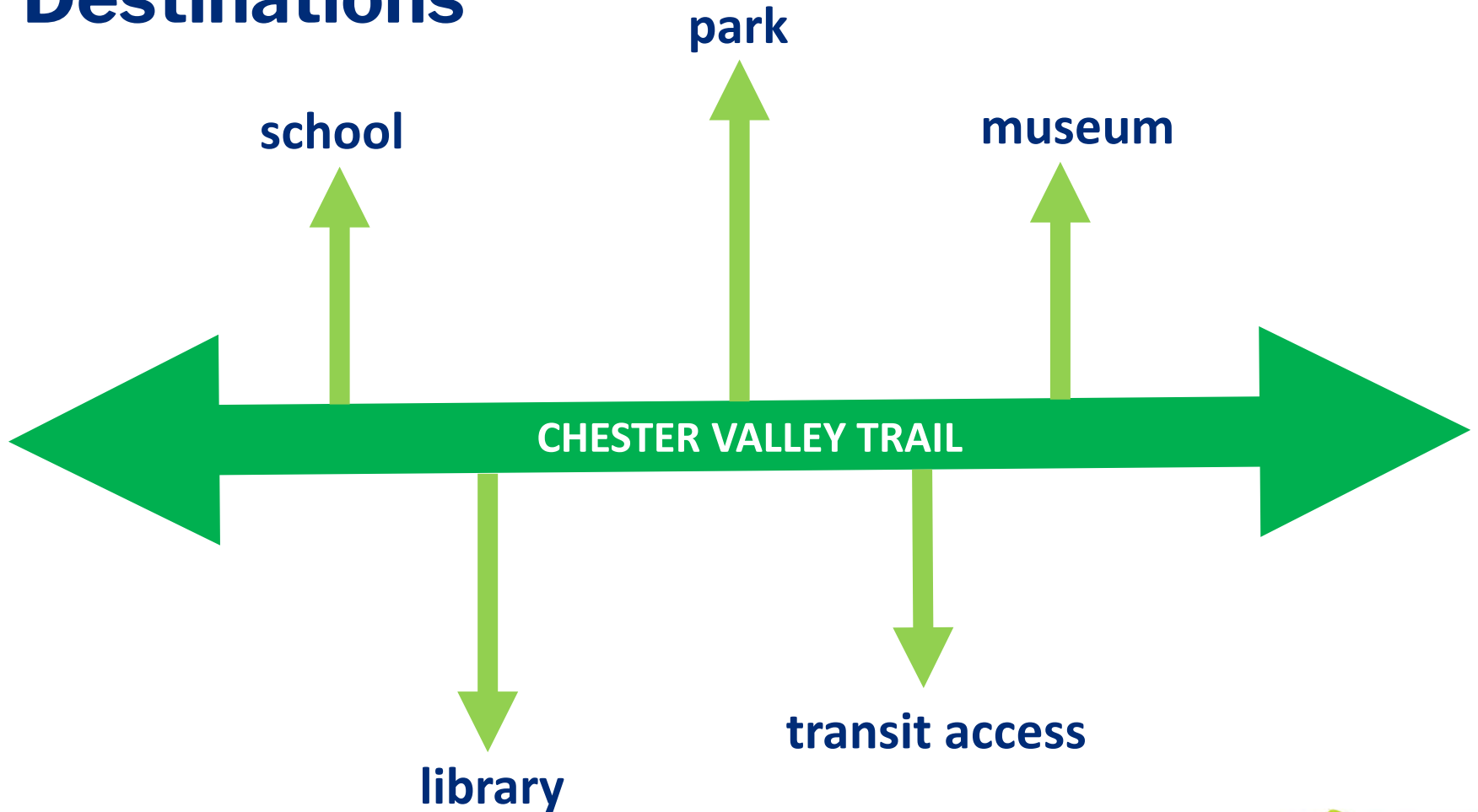
Public Survey Results

Of respondents living **OUTSIDE** the study area:

- **90%** *supportive of extending the Chester Valley Trail*
- **81%** reported they'd be likely to use the CVT if it were extended westward to Lancaster Co.
- **79%** would be likely to stop at a small business along the trail

Public Survey Results

Destinations



Public Survey Results

Most popular destinations/connections requested:

- 1. Train Stations**
- 2. Shops / Local Businesses**
- 3. Schools**
- 4. Restaurants**
- 5. Downtown commercial district**
- 6. Parks**
- 7. Libraries**
- 8. Coffee Shops/Cafes**

Field Views

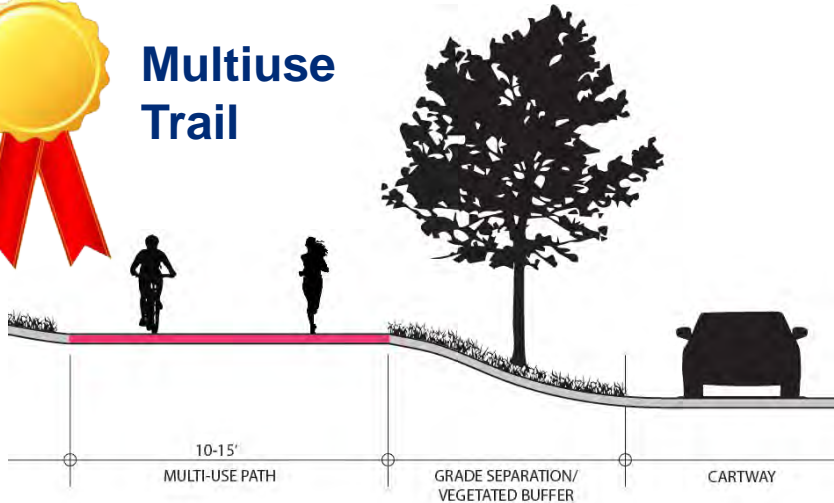


Chester Valley Trail WEST

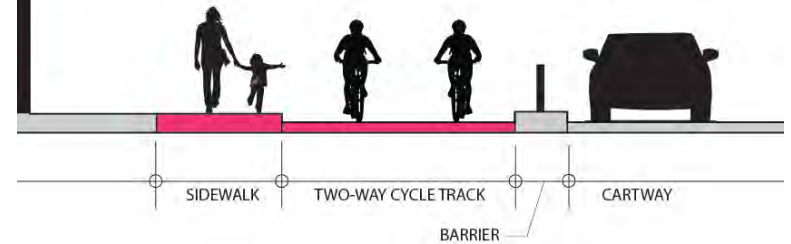
Trail Design Standards



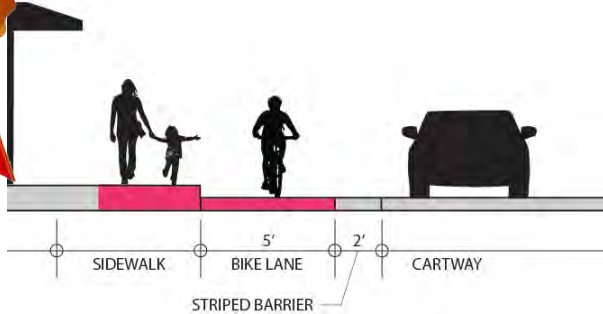
Multiuse Trail



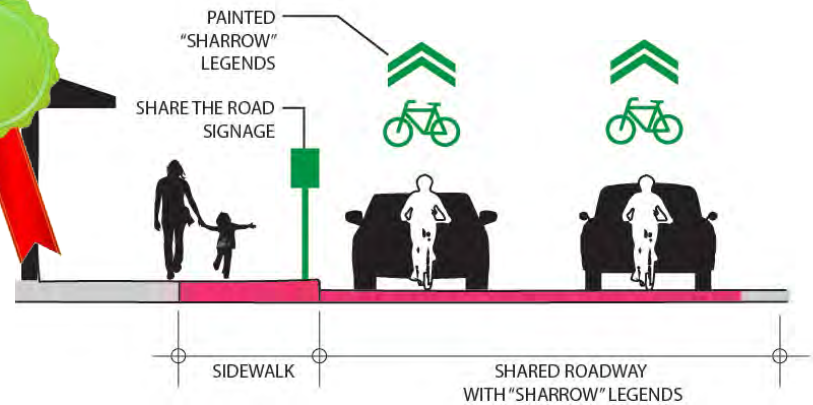
Cycle Track/ Protected Bike Facility



Bike Lane



Shared Road



Alignment Evaluation Factors

- **Safety**
- **Continuity**
- **Connectivity**
- **User experience**
- **Potentially affected privately-owned land**
- **Environmental and cultural impacts**
- **Economic development potential**

Concepts to Keep in Mind

- **Would I feel comfortable walking/cycling along each segment of the alignment alternatives presented?**
- **Does the trail pass through/near key destinations within my community?**

Alignment Alternatives



-  Multiuse
-  Split mode w/
dedicated bike
facility
-  Split mode
-  Shared road
(cycling only)

Potential Alignment Highlights

Chester Valley Trail Extension Terminus

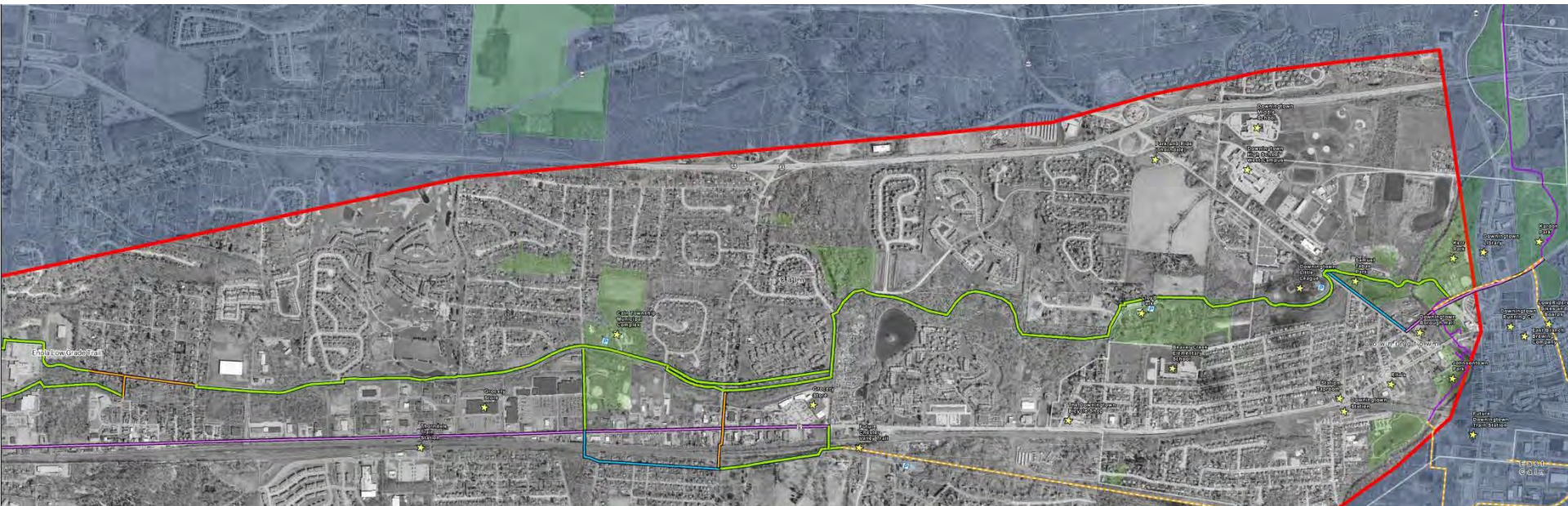


-  Multiuse
-  Split mode w/ dedicated bike facility
-  Split mode
-  Shared road (cycling only)

Chester Valley Trail WEST

Potential Alignment Highlights

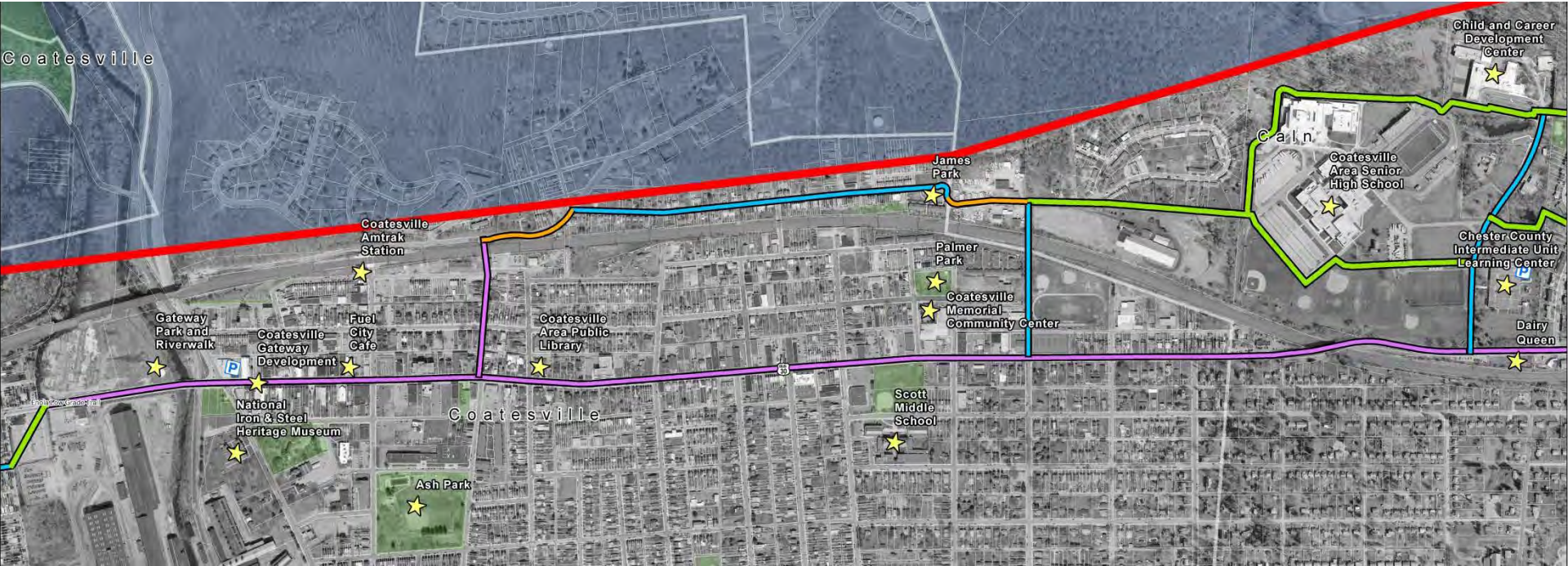
Beaver Creek Trail



-  Multiuse
-  Split mode w/ dedicated bike facility
-  Split mode
-  Shared road (cycling only)

Potential Alignment Highlights

Coatesville Cycle Track/Protected Bike Lane

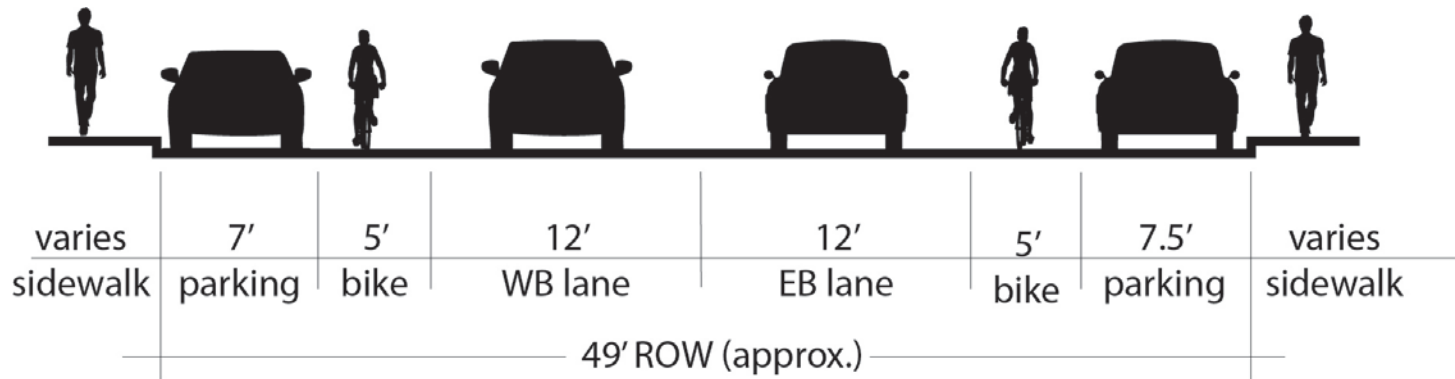


- Multiuse
- Split mode w/
dedicated bike
facility
- Split mode
- Shared road
(cycling only)

Potential Alignment Highlights

Coatesville Cycle Track/Protected Bike Lane

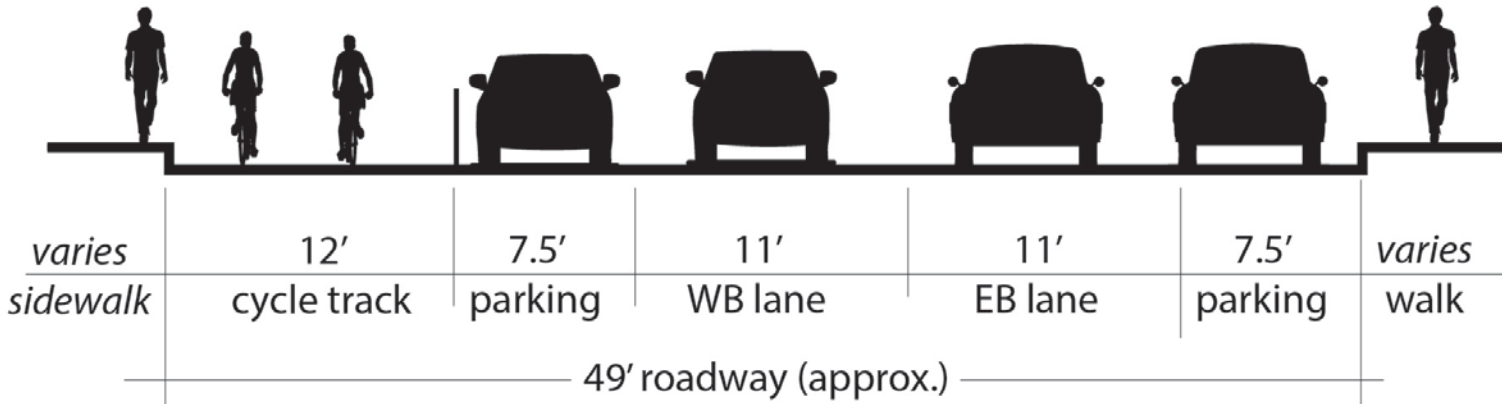
Business Route 30 Existing condition (approximate)



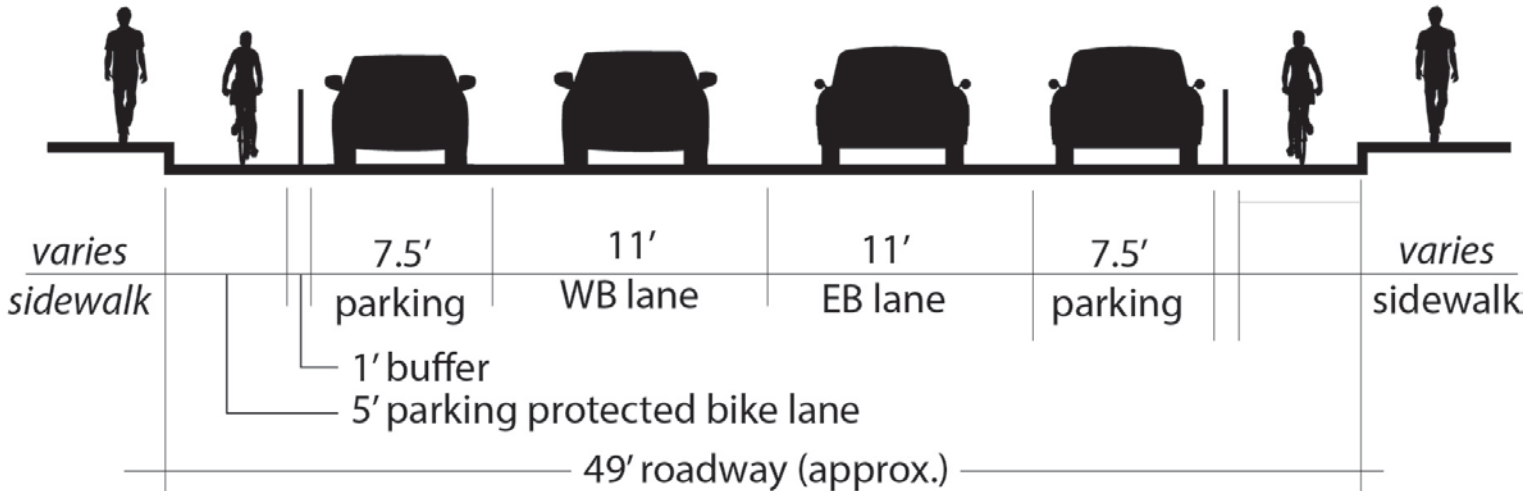
Potential Alignment Highlights

Coatesville Cycle Track/Protected Bike Lane

Cycle Track



Parking Protected Bike Lanes



Potential Alignment

Lincoln Highway - Coatesville



Existing condition



Potential interim condition -
Painted lane, buffer and signage



Parking protected "cycle track"
Or protected bike lane

Potential Alignment Highlights

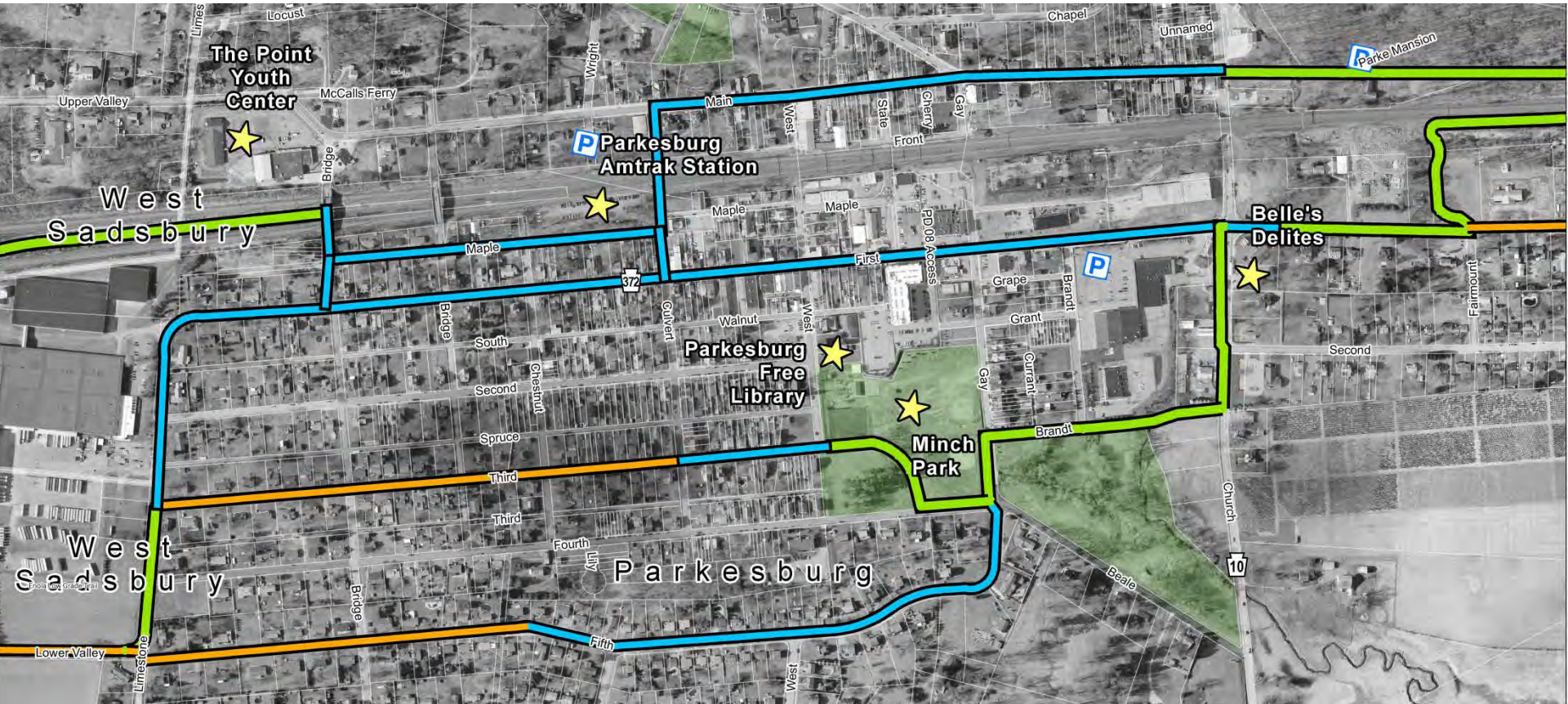
Inactive Rail Siding, Coatesville



-  Multiuse
-  Split mode w/ dedicated bike facility
-  Split mode
-  Shared road (cycling only)

Potential Alignment Highlights

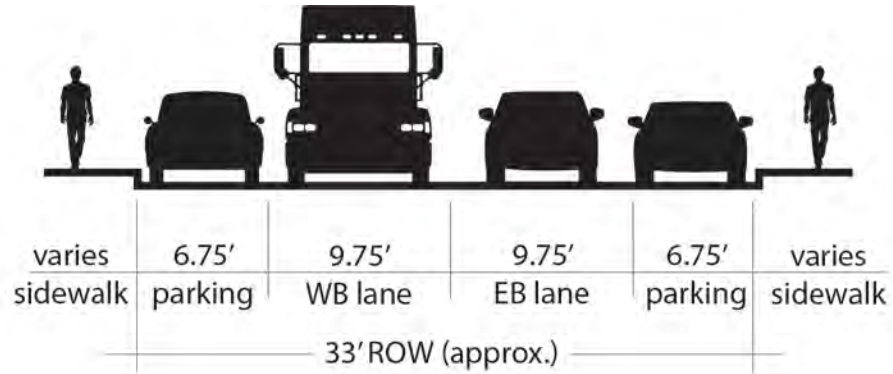
1st Ave./Main St., Parkesburg



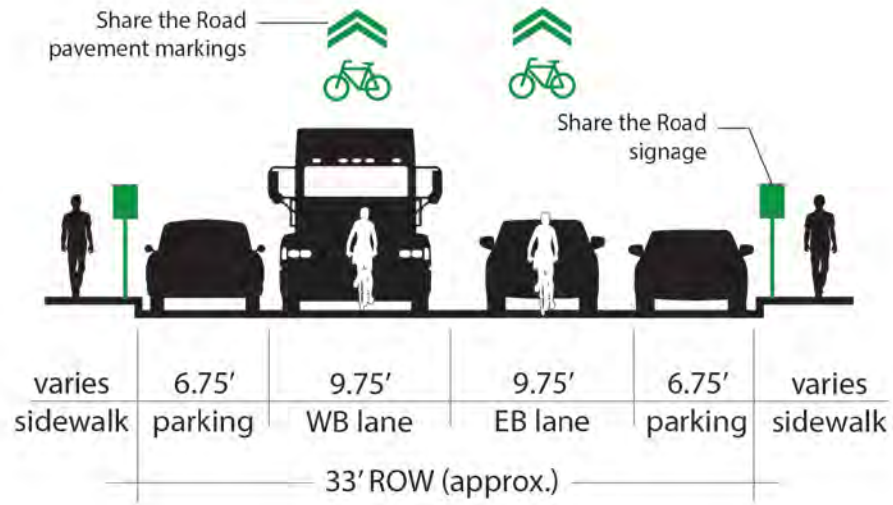
Potential Alignment Highlights

1st Ave./Main St., Parkesburg

**Existing condition
(approximate)**



**Potential future
condition**



Potential Alignment Highlights

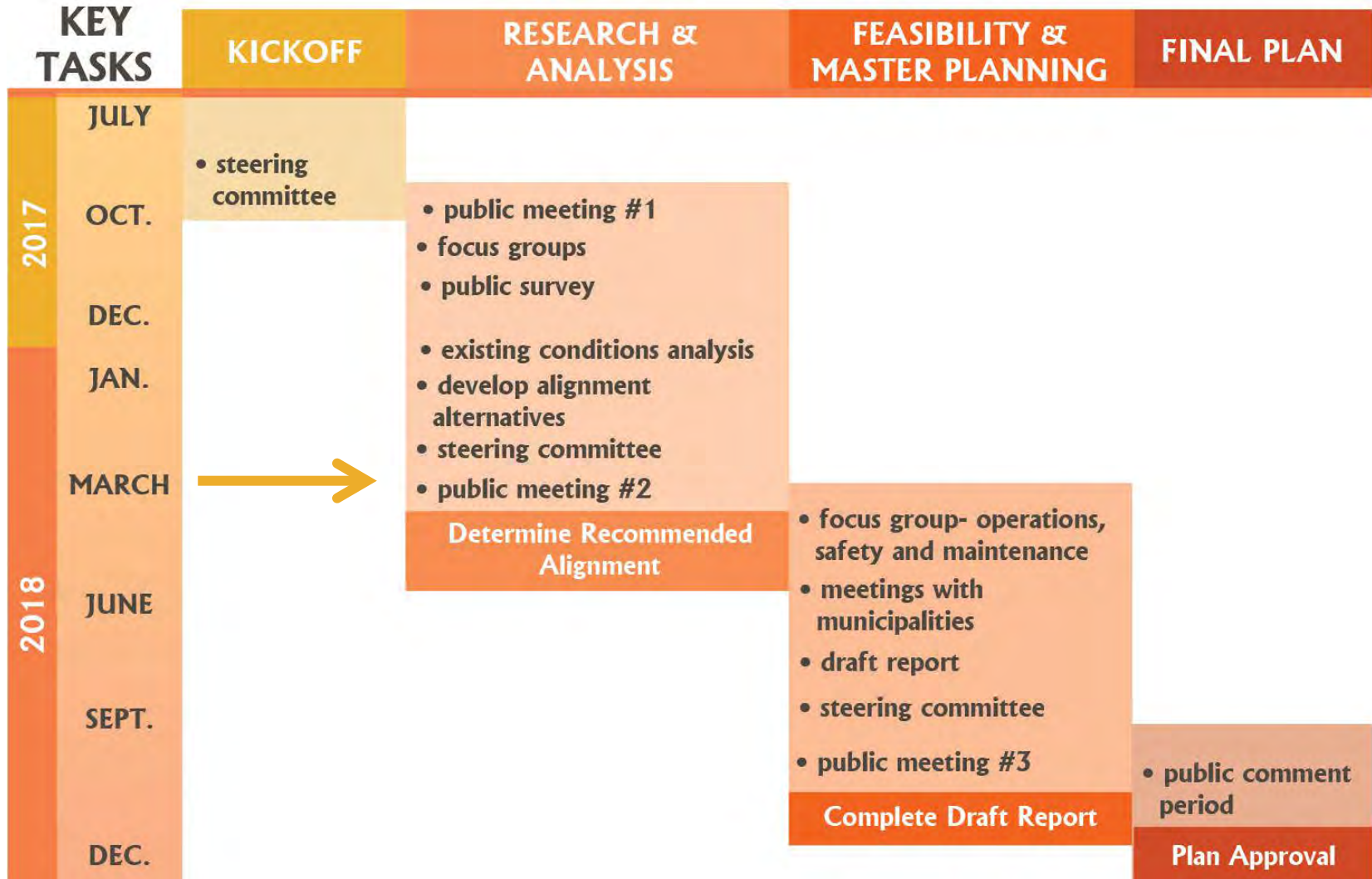
Enola Low Grade Corridor



Over 2 miles inactive rail corridor owned by SEPTA

-  Multiuse
-  Split mode w/ dedicated bike facility
-  Split mode
-  Shared road (cycling only)

Next Steps



Keep in Touch!

Rachael Griffith
*Trails and Open Space Planner,
Chester County Planning Commission*

rgriffith@chesco.org
610.344.6285

Project Website:
<http://www.chescoplanning.org/transportation/cvtw.cfm>