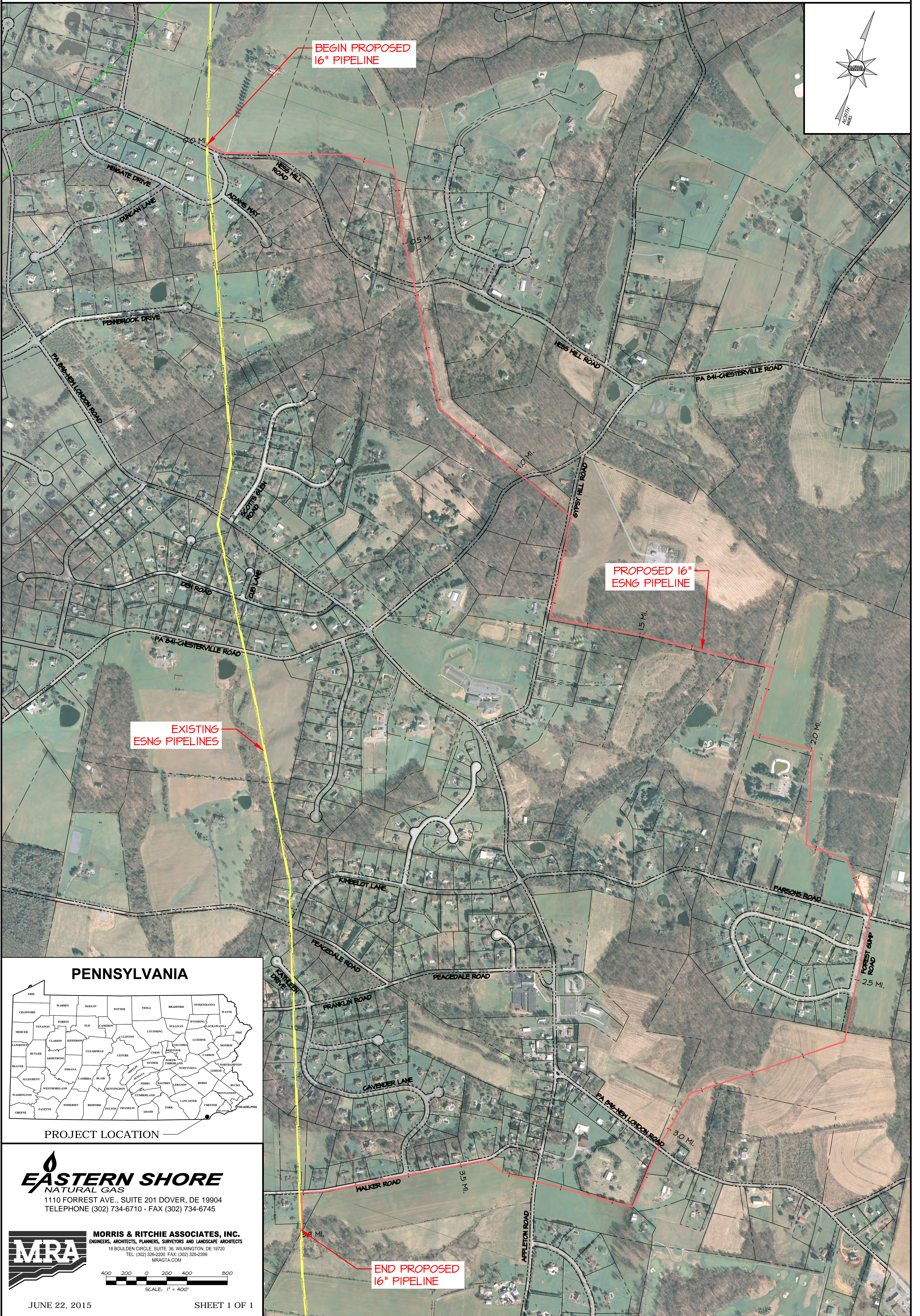
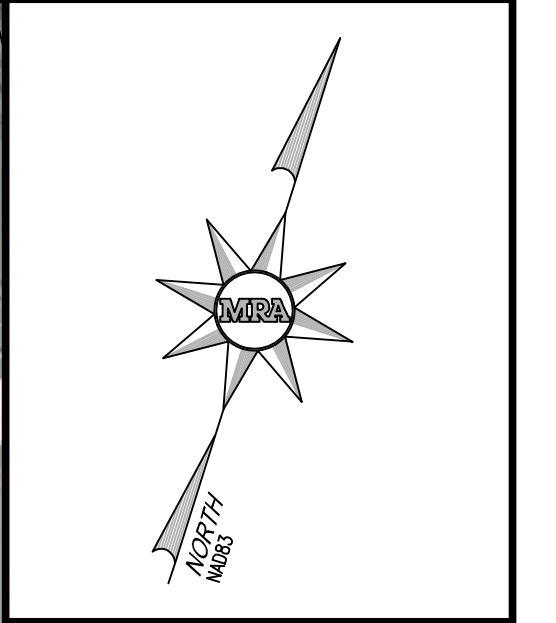


ESNG WHITE OAK MAINLINE EXPANSION PROJECT

KEMBLESVILLE LOOP



EXISTING
ESNG PIPELINES

BEGIN PROPOSED
16" PIPELINE

PROPOSED 16"
ESNG PIPELINE

END PROPOSED
16" PIPELINE

PENNSYLVANIA



PROJECT LOCATION

EASTERN SHORE
NATURAL GAS
1110 FORREST AVE., SUITE 201 DOVER, DE 19904
TELEPHONE (302) 734-6710 - FAX (302) 734-6745



MORRIS & RITCHIE ASSOCIATES, INC.
ENGINEERS, ARCHITECTS, PLANNERS, SURVEYORS AND LANDSCAPE ARCHITECTS
18 BOULDER CIRCLE, SUITE 36, WILMINGTON, DE 19720
TEL: (302) 326-2200 FAX: (302) 326-2399
MRA@MRA.COM

